

job name:
 type:

8" imago ii™ ceiling spec sheet 90CRI

driver housing / power head

extruded aluminum with silver anodized or black anodized finish, acts as heat sink as well. also available in painted finishes listed below.

reflector

.064 spun aluminum parabolic reflector with rolled bottom edge for added strength and anodized paint finish, held in place with socket cap screws. includes highly reflective matte white segmented internal insert for optimal fixture efficiency.

modular construction

integrated solder-less holder provides superior connectivity and allows for LED module replacement in the field. modular fixture design allows driver to be replaced in the field.

LED module

COB array in 2700K, 3000K, 3500K, or 4000K. (call factory for 5000K) (90+ cri standard). under normal operating conditions, the LEDs employed are rated for >50,000hrs L70 (6.8K) per IES TM-21 from LM-80 test data.

driver

integral, programmable, UL class P, class 2, universal input (120-277v), constant current, 0-10v dimming, 1% minimum dimming level, PF >.9, THD <20%, protections include open and short circuit, overload and over temperature.

mounting

mounts to standard j-box (by other).

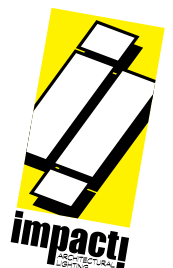
emergency

recommend use of inverter (by other).
 optional WREM: wired for remote EM battery (by other).



catalog number

C3108				
size	CCT	lumens	anodized finishes	options
C3108 8" dia X 17.5"ht	27 2700K	FX 1630 lm	AN silver anodized	BL frosted acrylic bottom lens
See p.2 & 3 for info on C3112 and C3116	30 3000K	LO 2300 lm	ANB anodized black	PTRSB Painted reflector satin black finish
	35 3500K	HI 3165 lm	painting finish	WREM wired for remote EM battery pack (by other) (see note above)
	40 4000K	HX 4025 lm	BS brass	ELD EldoLED*
		CL* xxxx lm * custom lumens consult factory	BU blue	LUT Lutron* *consult factory
			BZ bronze	
			CP champagne	
			GM gun metal	
			MB military blue	
			MW matte white	
			OR orange	
			RD red	
			SS satin silver	
			TG textured gray	
			YO yellow	
			premium finish	
			RAL specify RAL#	



job name:
 type:

12" imago ii™ ceiling spec sheet 90CRI

driver housing / power head

extruded aluminum with silver anodized or black anodized finish, acts as heat sink as well. also available in painted finishes listed below.

reflector

.064 spun aluminum parabolic reflector with rolled bottom edge for added strength and anodized paint finish, held in place with socket cap screws. includes highly reflective matte white segmented internal insert for optimal fixture efficiency.

modular construction

integrated solder-less holder provides superior connectivity and allows for LED module replacement in the field. modular fixture design allows driver to be replaced in the field.

LED module

COB array in 2700K, 3000K, 3500K, or 4000K. (call factory for 5000K) (90+ cri standard). under normal operating conditions, the LEDs employed are rated for >50,000hrs L70 (6.8K) per IES TM-21 from LM-80 test data.

driver

integral, programmable, UL class P, class 2, universal input (120-277v), constant current, 0-10v dimming, 1% minimum dimming level, PF >.9, THD <20%, protections include open and short circuit, overload and over temperature.

mounting

mounts to standard j-box (by other).

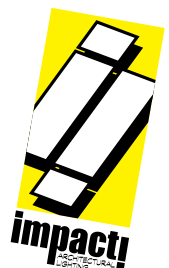
emergency

recommend use of inverter (by other).
 optional WREM: wired for remote EM battery (by other).



catalog number

C3112				
size	CCT	lumens	anodized finishes	options
C3112 12"dia X 21"ht	27 2700K	FX 1630 lm	AN silver anodized	BL frosted acrylic bottom lens
See p. 3 for info on C3116	30 3000K	LO 2300 lm	ANB anodized black	PTRSB Painted reflector satin black finish
	35 3500K	HI 3165 lm	painting finish	WREM wired for remote EM battery pack (by other) (see note above)
	40 4000K	HX 4025 lm	BS brass	ELD EldoLED*
		CL* xxxx lm * custom lumens consult factory	BU blue	LUT Lutron* *consult factory
			BZ bronze	
			CP champagne	
			GM gun metal	
			MB military blue	
			MW matte white	
			OR orange	
			RD red	
			SS satin silver	
			TG textured gray	
			YO yellow	
			premium finish	
			RAL specify RAL#	



job name:
 type:

16" imago ii™ ceiling spec sheet 90CRI

driver housing / power head

extruded aluminum with silver anodized or black anodized finish, acts as heat sink as well. also available in painted finishes listed below.

reflector

.064 spun aluminum parabolic reflector with rolled bottom edge for added strength and anodized paint finish, held in place with socket cap screws. includes highly reflective matte white segmented internal insert for optimal fixture efficiency.

modular construction

integrated solder-less holder provides superior connectivity and allows for LED module replacement in the field. modular fixture design allows driver to be replaced in the field.

LED module

COB array in 2700K, 3000K, 3500K, or 4000K. (call factory for 5000K) (90+ cri standard). under normal operating conditions, the LEDs employed are rated for >50,000hrs L70 (6.8K) per IES TM-21 from LM-80 test data.

driver

integral, programmable, UL class P, class 2, universal input (120-277v), constant current, 0-10v dimming, 1% minimum dimming level, PF >.9, THD <20%, protections include open and short circuit, overload and over temperature.

mounting

mounts to standard j-box (by other).

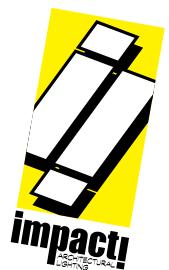
emergency

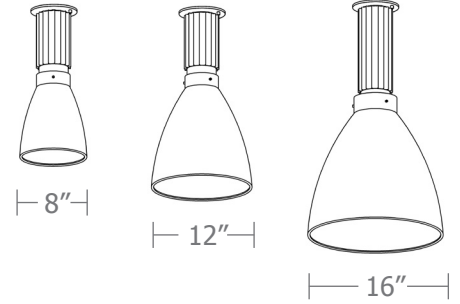
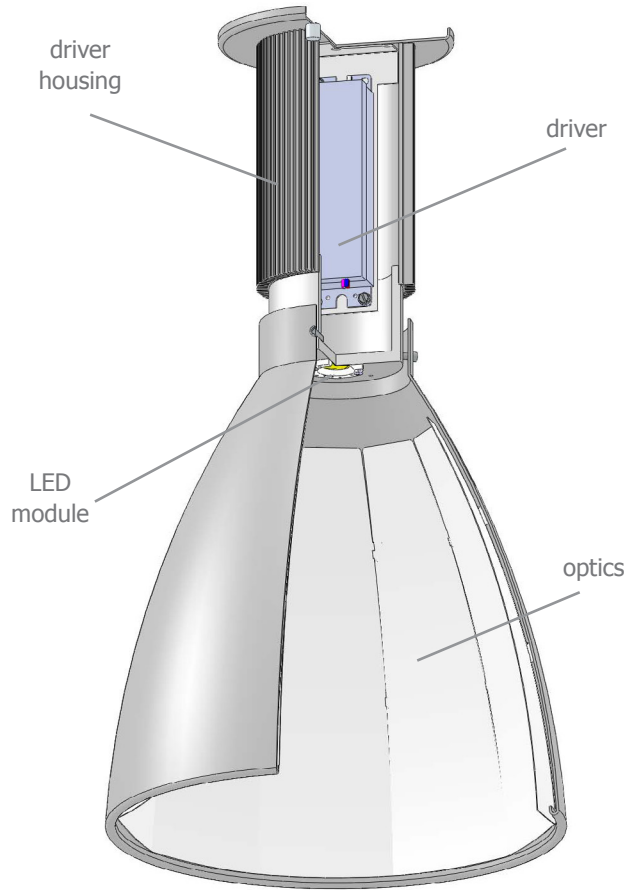
recommend use of inverter (by other).
 optional WREM: wired for remote EM battery (by other).




catalog number

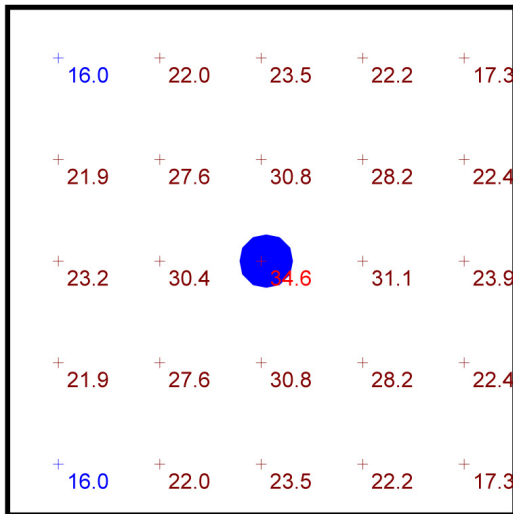
C3116				
size	CCT	lumens	anodized finishes	options
C3116 16"dia X 28"ht	27 2700K	FX 2120 lm	AN silver anodized	BL frosted acrylic bottom lens
	30 3000K	LO 3000 lm	ANB anodized black	PTRSB Painted reflector satin black finish
	35 3500K	HI 3900 lm	painting finish	WREM wired for remote EM battery pack (by other) (see note above)
	40 4000K	HX 5025 lm	BS brass	ELD EldoLED*
		CL* xxxx lm <small>* custom lumens consult factory</small>	BU blue	LUT Lutron* <small>*consult factory</small>
			BZ bronze	
			CP champagne	
			GM gun metal	
			MB military blue	
			MW matte white	
			OR orange	
			RD red	
			SS satin silver	
			TG textured gray	
			YO yellow	
			premium finish	
			RAL specify RAL#	





Typical Lighting Layout

Schedule						
Symbol	QTY	Manufacturer	Catalog Number	Description	Lamp	Wattage
	1	Impact Architectural Lighting	C3112 40 HX	12" dia. ceiling mount imago.ii luminaire w/ 4000k 90cri LED open bottom	4000k 90cri LED	38

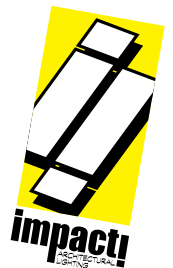


Plan View
Scale - 1" = 2ft

Statistics

Description	Symbol	Avg	Max	Min	Max/Min	Avg/Min
imago.ii ceiling	+	24.3 fc	34.6 fc	16.0 fc	2.2:1	1.5:1

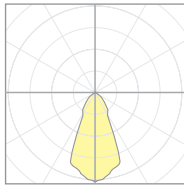
- 10' x 10' x 14'H space
- 80/50/20 reflectances
- bottom of fixture at 12' aff
- FC readings at 2.5' aff
- layout conducted using 12" dia. unit with HX lumen 90 CRI package providing 4025 delivered lumens



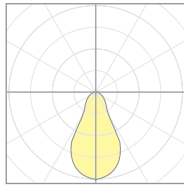
Calculation Table

The application of a Light Loss Factor is required to:

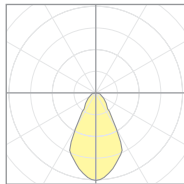
- match the lumen output for the power module specified
- incorporate the increased lumen output due to LED/Driver upgrades



19344
P3108-40HI



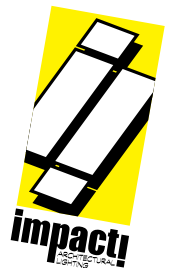
19353
P3112-40HI



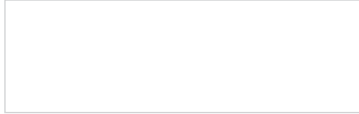
19274
P3116-40HI

Cat No	Delivered Lumens*	Watts 120V / 277V	IES File #	LLF to be applied
C3108 FX	1630	17	17551 open	1.22
			17552 lensed	1.49
C3108 LO	2300	24	17551 open	1.72
			17552 lensed	2.10
C3108 HI	3165	34	19344 open	1.27
			19345 lensed	1.23
C3108 HX	4025	44	19344 open	1.61
			19345 lensed	1.56
C3112 FX	1630	17	19353 open	1.01
			19353 lensed	.91
C3112 LO	2300	24	19353 open	1.43
			19353 lensed	1.28
C3112 HI	3165	34	19353 open	1.96
			19353 lensed	1.77
C3112 HX	4025	44	19353 open	2.50
			19353 lensed	2.25
C3116 FX	2120	20	19274 open	.77
			19275 lensed	.71
C3116 LO	3000	29	19274 open	1.08
			19275 lensed	1.00
C3116 HI	3900	40	19274 open	1.41
			19275 lensed	1.31
C3116 HX	5025	54	19273 open	1.12
			19275 lensed	1.68

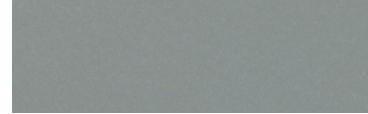
*delivered lumens based on 4000K, 90+ cri



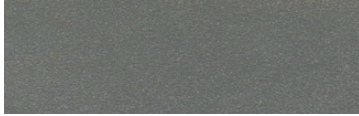
Powder Coat Paint Finishes



MW matte white



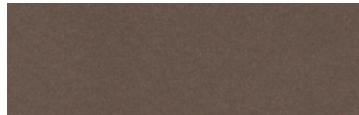
SS satin silver



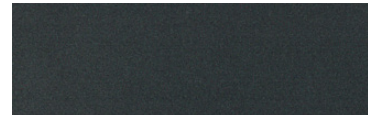
TG textured gray



CP champagne



BZ bronze



GM gun metal



OR orange 2011



BU blue 5017



BS brass



RD red 3020



YO yellow 1018



MB military blue

For accurate color verification, actual finish samples are available upon request.

Premium Finishes*



RAL#

*Available on select series. Consult product submittal for availability.

